

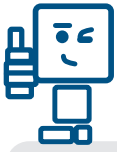
Product Group
Safety modules



*

no external
initiators necessary





VersiSafe VSA



Features:

- no external initiators necessary
- independent of direction
- broken wire detection
- positive guided safety contacts: 3 NO contacts, 1 NC contact for AC 250V
- adjustable voltage setting
- adjustable standstill time delay
- LED indicators for standstill, event of line breakage and operating voltage
- Suitable for operating with inverters
- width 45mm
- nominal motor voltage up to 690V

Functions:

- safe standstill detection on three- and single-phase motors
- detection of standstill via monitoring of remanence voltage
- redundant measurement via two independent channels
- adaptable to various motor types and applications

Safety rated data::

- value according to EN ISO 13849-1:
 - safety category: 4
 - performance level: e
 - MTTF_d: 93a
 - DC_{avg}: 99,0%
 - d_{op}: 365 days/year
 - h_{op}: 24 hours/day
 - t_{zyklus}: 28,8E+03 s/zyklus = 1 / 8 hours
- value according to IEC EN 62061 / IEC EN 61508:
 - SIL CL: 3 IEC EN 62061
 - SIL 3 IEC EN 61508
 - HFT: 1 (Hardware-Failure-Tolerance)
 - DC_{avg}: 99,0%
 - SFF 99,7%
 - PFH_D: 4,10E-10 h⁻¹

Typical designation	VersiSafe
input L1, L2, L3 measuring-/motor voltage	max. 690V
safety output (3 NO contacts / 1 NC contact)	AC 250V, 5A
indicator contact	AC 250V, 3A
auxiliary voltage U _H	DC 24V, AC 230V, AC 400V
response value U _{an}	20 ... 400mV
standstill time	0,2 ... 6s
max. operating frequency	1200/h
ambient/storage temperature	-25°C ... +60°C / -40°C ... +75°C

Safety Frequency Monitor VersiSafe Speed



Features:

- over-, underfrequency or window monitoring of single-phase or 3-phase AC systems
- user friendly frontside display
 - comfortable, menu guided configuration
 - for set point and actual value of Hz
- manual or auto-reset
- simple and time-saving setup without PC
- extensive diagnostic functions
- possibility of overriding the speed by a supervisory function (muting)
- up to 4 activatable operating modes (e.g. automatic-, installation- or service operation)
- galvanic separation between measuring input, auxiliary voltage and output contacts
- 2-channel function
- forcibly guided output contacts
- LED-indicators and 2 semiconductor monitoring output
- analog output
- up to 4 frequency modes selectable
- width 45 mm

Functions:

- fast reaction time by measuring duration of cycle of input frequency
- adjustable hysteresis
- adjustable reset delay function from 0 ... 100 s
- adjustable start up time delay from 0 ... 100 s
- adjustable alarm delay from 0,1 ... 100 s

Safety rated data:

- safety category 4 / Performance Level (PL) e to DIN EN ISO 13849-1
- SIL-Claimed Level (CL) 3 to EN 62061 and EN 61800-5-2
- SIL 3 to IEC 61508 and EN 61511
- safety functions according to EN 61800-5-2
 - STO (Safe Torque Off),
 - SOS (Safe Operating Stop),
 - SLS (Safely Limited Speed),
 - SSM (Safe Speed Monitor)
 - SSR (Safe Speed Range)

Typical designation	VersiSafe Speed
voltage range	AC 8 ... 280 V
	AC 16 ... 690 V
auxiliary voltage U_H	24 VDC, typ. 3,2W
input frequency	<700Hz
response value (frequency threshold)	adjustable from 1 Hz ... 600 Hz
pulse frequency inverter	≥ 1 kHz
measuring accuracy	$< \pm 2$ %
reaction time of frequency monitoring	duration of 1 cycle (inverse value of adjusted frequency) + 10 ms + adjusted response delay
contacts	2 NO contacts forcibly guide, Semiconductor monitoring output
degree of protection	housing IP40, terminals IP20
ambient- /storage temperature	-25°C...+60°C / -40°C...+75°C

Our range of products:

Soft Starters

Braking Devices

Combined Motor Start and Braking Devices

Variable Speed Drives

DC-Controllers

Monitoring Modules

01/2018



www.peter-electronic.com

