

Preset counters mechanic

Meter and revolution counters, subtracting

Display 4-digits, manual reset by button

ME102, UE102



ME102 - Meter counter



UE102 - Revolution counter

Features

- Preset counter with one preset
- Meter or revolution counter
- Subtracting
- Display 4-digits
- With reset button
- Compact design
- Surface mount housing

Technical data - mechanical design

Number of digits	4-digits
Digit height	5.5 mm
Count mode	Subtracting in a rotational direction to be indicated, adding in reverse direction
Drive shaft	Both sides, $\varnothing 4$ mm
Reset	Manual by button to preset
Operating torque	≤ 0.8 Nm (with 1 rev. = 1 count) ≤ 0.4 Nm (with 50 rev. = 1 count)
Measuring range	See ordering part number
Operating temperature	0...+60 °C
Housing type	Surface mount housing
Housing colour	Grey
Dimensions W x H x L	60 x 62 x 68.5 mm
Dimensions mounting plate	60 x 62 mm
Mounting	Surface mount housing
Weight approx.	350 g
Material	Housing: Hostaform POM, grey
E-connection	Cable 30 cm, 3 cores

Technical data - electrical ratings

Preset	1 preset
Preset setting	Press reset button and hold. Enter desired value in any order. Release reset button.
Limit switch	Momentary contact at 0000 Permanent contact at 9999
Precontact	Permanent precontact as momentary contact
Output contact	Change-over contact
Switching voltage	230 VAC / VDC
Switching current	2 A
Switching capacity	100 VA / 30 W
Spark extinguisher	Recommended for inductive load

Preset counters mechanic

Meter and revolution counters, subtracting

Display 4-digits, manual reset by button

ME102, UE102

Technical data - mechanical design

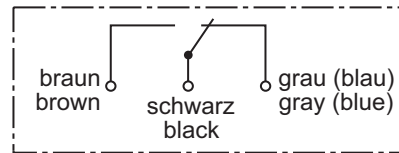
ME102

Function	Meter counter with preset
Display	White numbers on black Decimal digits in red
Measuring speed	5 revs. = 1 digit = <2000 m/min 5 revs. = 10 di. = <200.0 m/min
Measuring precision	1 m, 1 dm, 1 cm

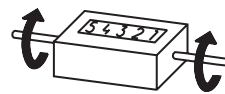
UE102

Function	Revolution counter with preset
Display	White numbers on black
Operating speed	≤10000 rpm

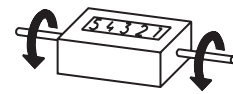
Connection diagram



Direction of strokes and rotation



Away from user
Sense of rotation I



Towards user
Sense of rotation II

Accessories

Measuring wheels for UE102 (page %S)

MR211.04A Circumf. 20 cm, knurled aluminium

MR241.04D Circumf. 20 cm, smooth Hytrel TPE-E

MR261.04A Circumf. 20 cm, knopped rubber NBR Nitril

MR291.04D Circumf. 20 cm, grooved Hytrel TPE-E

Preset counters mechanic

Meter and revolution counters, subtracting

Display 4-digits, manual reset by button

ME102, UE102

Part number

Meter counter

ME102.0

Measuring range / trigger

- A 9999 m / contact at 0000
- B 999.9 m / contact at 0000
- C 99.99 m / Contact at 0000
- D 8999 m / Contact at 9999
- E 899.9 m / Contact at 9999
- F 89.99 m / Contact at 9999
- G 8999 m / Contact at 9999, with precontact
- H 899.9 m / Contact at 9999, with precontact
- I 89.99 m / Contact at 9999, with precontact

Count mode /Direction of rotation

- 03 5 revs. = 100 digits / I
- 04 5 revs. = 100 digits / II
- 09 5 revs. = 10 digits / I
- 10 5 revs. = 10 digits / II
- 15 5 revs. = 1 digit / I
- 16 5 revs. = 1 digit / II
- 21 50 revs. = 1 digit x 10 / I
- 22 50 revs. = 1 digit x 10 / II

Housing

- A Grey, cable 0.3 m / without precontact
- B Grey, cable 0.3 m / with precontact

Trigger

- 1 Permanent contact at 0000
- 2 Permanent contact at 9999
- 3 Permanent contact at 9999, permanent precontact as momentary contact

Revolution counter

UE102.0

Measuring range / trigger

- A 9999 m / contact at 0000
- D 8999 m / Contact at 9999
- G 8999 m / Contact at 9999, with precontact

Count mode /Direction of rotation

- 05 1 rev. = 10 digits / I
- 06 1 rev. = 10 digits / II
- 11 1 rev. = 1 digit / I
- 12 1 rev. = 1 digit / II

Housing

- A Grey, cable 0.3 m / without precontact
- E Grey, cable 1.0 m / with precontact

Trigger

- 1 Permanent contact at 0000
- 2 Permanent contact at 9999
- 3 Permanent contact at 9999, permanent precontact as momentary contact

Preset counters mechanic

Meter and revolution counters, subtracting
Display 4-digits, manual reset by button

ME102, UE102

Dimensions

