

# Preset counters mechanic

## Large meter and revolution counters, subtracting

### Display 5 digits, manual reset by lever

#### ME230, UE230



ME230 - Meter counter



UE230 - Revolution counter

#### Technical data - electrical ratings

Preset	1 preset
Preset setting	Press reset button and hold. Enter desired value in any order. Release reset button.
Limit switch	Trigger at zero (subtracting)
Output contact	Change-over contact
Switching voltage	230 VAC / VDC
Switching current	2 A
Switching capacity	100 VA / 30 W
Spark extinguisher	Recommended for inductive load

#### ME230

Precontact	Permanent precontact as permanent contact (please indicate desired value when ordering)
------------	---

#### Features

- Preset counter with one preset
- Meter or revolution counter
- Subtracting
- Display 5-digits
- Reset by lever
- ME230 with precontact

#### Technical data - mechanical design

Number of digits	5-digits
Digit height	7 mm
Count mode	Adding in a rotational direction to be indicated, subtracting in reverse direction. See part number key
Drive shaft	Both sides, $\varnothing 7$ mm
Reset	By reset lever to preset value. Do not let snap lever or make jerky movements.
Measuring range	See ordering part number
Operating temperature	0...+60 °C
Housing type	Surface mount housing
Housing colour	Grey
Dimensions W x H x L	126 x 88 x 78 mm
Dimensions mounting plate	142 x 88 mm
Mounting	Base plate, 4 mounting holes
Weight approx.	950 g
Material	Aluminium die cast alloy
E-connection	Terminal block connector

#### ME230

Function	Meter counter with preset
Display	White numbers on black Decimal digits in red
Measuring speed	2 revs. = 1 digit = <2500 m/min 2 revs. = 10 di. = <250.0 m/min
Measuring precision	1 m, 1 dm

#### UE230

Function	Revolution counter with preset
Display	White numbers on black
Operating speed	≤5000 rpm

# Preset counters mechanic

## Large meter and revolution counters, subtracting

### Display 5 digits, manual reset by lever

ME230, UE230

#### Part number

#### Meter counter

ME230.0 0 A      

#### Measuring range / trigger

- A 99 999 m / permanent contact at 00000
- B 9999.9 m / permanent contact at 00000
- G 89 999 m / permanent contact at 99999, with permanent precontact
- H 8999.9 m / permanent contact at 99999, with permanent precontact

#### Count mode /Direction of rotation

- 03 2 revs. = 10 digits / I
- 04 2 revs. = 10 digits / II
- 13 2 revs. = 1 digit / I
- 14 2 revs. = 1 digit / II

#### Housing

- A Surface mount housing, grey

#### Trigger

- 1 Permanent contact at 00000
- 5 Permanent contact at 99999, with permanent precontact

#### Revolution counter

UE230.0 1 0 A   A

#### Measuring range

- A 99 999

#### Count mode /Direction of rotation

- 11 1 rev. = 1 digit / I
- 12 1 rev. = 1 digit / II

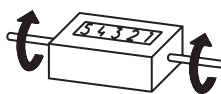
#### Housing

- A Surface mount housing, grey

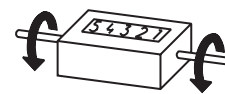
#### Trigger

- 1 Permanent contact at 00000

#### Direction of strokes and rotation



Away from user  
Sense of rotation I



Towards user  
Sense of rotation II

#### Accessories

##### Measuring wheels for UE230 (page %S)

MR512.07A	Circumf. 50 cm, knurled aluminium
MR542.07D	Circumf. 50 cm, smooth Hytel TPE-E
MR552.07A	Circumf. 50 cm, smooth Vulkollan PUR
MR562.07A	Circumf. 50 cm, knopped rubber NBR Nitril
MR592.07D	Circumf. 50 cm, grooved Hytel TPE-E

#### Dimensions

