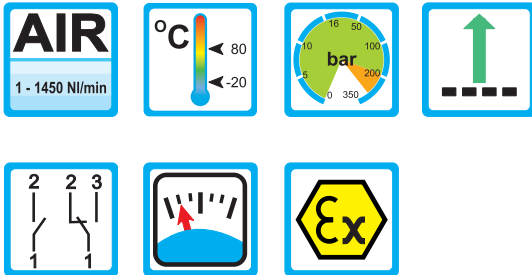


Flow Monitor Flow Indicator

DWM/A-L



Range of Application

Operation

- Float measuring principle

Application

- Cooling systems and cooling circuits
- Mechanical engineering
- Medicine technology
- Pharma industry
- Chemical industry
- Research and development

Features

- High reliability
- High switch accuracy
- Wide switch range
- Infinitely variable switchpoint, adjustment through user
- EX-version to ATEX available
- High pressure resistance
- Threaded connection, special threads on request

Installation hints

- The operating instructions for DWM/A-L must be observed!
- Download: www.meister-flow.com

Operating Data

Operating pressure max.	200 bar (Brass) 300 bar (Stainless steel)
Pressure drop	0,02 - 0,4 bar
Maximum temperature	80 °C
Accuracy	±10 % of full scale

Measuring Ranges

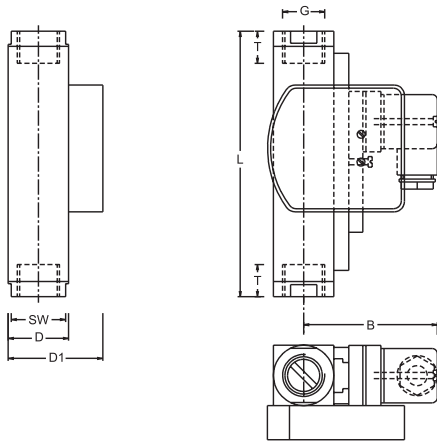
Type	Switch range for Air at 1 bar abs. and 20 °C ⁽¹⁾		
	[NI/min]	[SCFH]	[SCFM]
DWM/A-L1,5	1 - 28	2,0 - 59,0	
DWM/A-L3	4 - 60	8,0 - 127,0	
DWM/A-L8	6 - 160	15,0 - 340,0	
DWM/A-L12	20 - 240	40,0 - 510,0	
DWM/A-L18	40 - 360	80,0 - 760,0	
DWM/A-L50	60 - 700		2,0 - 24,5
DWM/A-L100	200 - 1450		11,0 - 106,0

¹⁾ The specified data are switch-off points, other switch ranges on request.

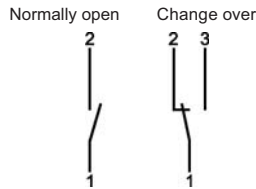


Technical Data

Mechanical drawing



Connection diagram



Summary of types

Type:	Overall dimensions [mm]								Weight approx. [g]
	SW	D	D1	B	G	DN	T	L	
DWM/A-L1,5					1/4"	8	14		
DWM/A-L3	27	30	47	71	3/8"	10	19	131	850
DWM/A-L8					1/2"	15	19		
DWM/A-L12									
DWM/A-L18	27	30	47	71	1/2"	15	19	146	900
	32	35			3/4"	20	17	174	1010
DWM/A-L50	34	40	57	76	3/4"	20	18	152	1400
	40				1"	25	19	156	1100
DWM/A-L100	50	50	67	81	1"	25	20	200	2800

Electrical Data

Change over	250V • 1,5A • 50VA ⁽²⁾
Normally open	250V • 3A • 100VA

ATEX II 2 G Ex mb II T6 & ATEX II 2 D Ex tD A21 IP67 T80 °C
ATEX II 2 G Ex mb II T5 & ATEX II 2 D Ex tD A21 IP67 T100 °C

Change over	250V • 1A • 30VA
Normally open	250V • 2A • 60VA

Change over M 12x1 (-20 °C - 85 °C)	250V • 1,5A • 50VA ⁽²⁾
--	-----------------------------------

Normally open M 12x1 (-20 °C - 85 °C)	250V • 3A • 100VA
--	-------------------

Change over SPS	250V • 1A • 60VA
------------------------	------------------

Ingress Protection:

IP65: plug connection DIN 43650 Form A

IP67: 1 m sealed in cable, (with EEx-version 2 m)
 or plug connection M 12x1

Output Signal

The contact opens / changes when the flow decreases below the set point.

Power supply

Not required (potentialfree reed contacts)

Plug types

Other plug types or cable lengths on request

⁽²⁾ Minimum load 3 VA

Material

Brass Version

Wetted parts:

Float:	POM
Gaskets:	NBR (optional FKM, EPDM) ⁽³⁾
Threaded rings: (only DWM/A-L-50, -100 (1"))	Brass
Centering washer: (DWM/A-L-50)	Brass nickel-plated
Fittings: (not for DWM/A-L-50, -100 (1"))	Brass nickel-plated
Indicator:	Makrolon / Brass nickel-plated
All other wetted parts:	Brass nickel-plated

Stainless Steel

Wetted parts:

Float:	POM
Gaskets:	FKM (optional NBR, EPDM) ⁽³⁾
Threaded rings: (only DWM/A-L-50, -100 (1"))	1.4571
Centering washer: (DWM/A-L-50)	1.4571
Fittings: (not for DWM/A-L-50, -100 (1"))	1.4571
Indicator:	Makrolon / Brass nickel-plated
All other wetted parts:	1.4571

⁽³⁾ Other gaskets materials on request

